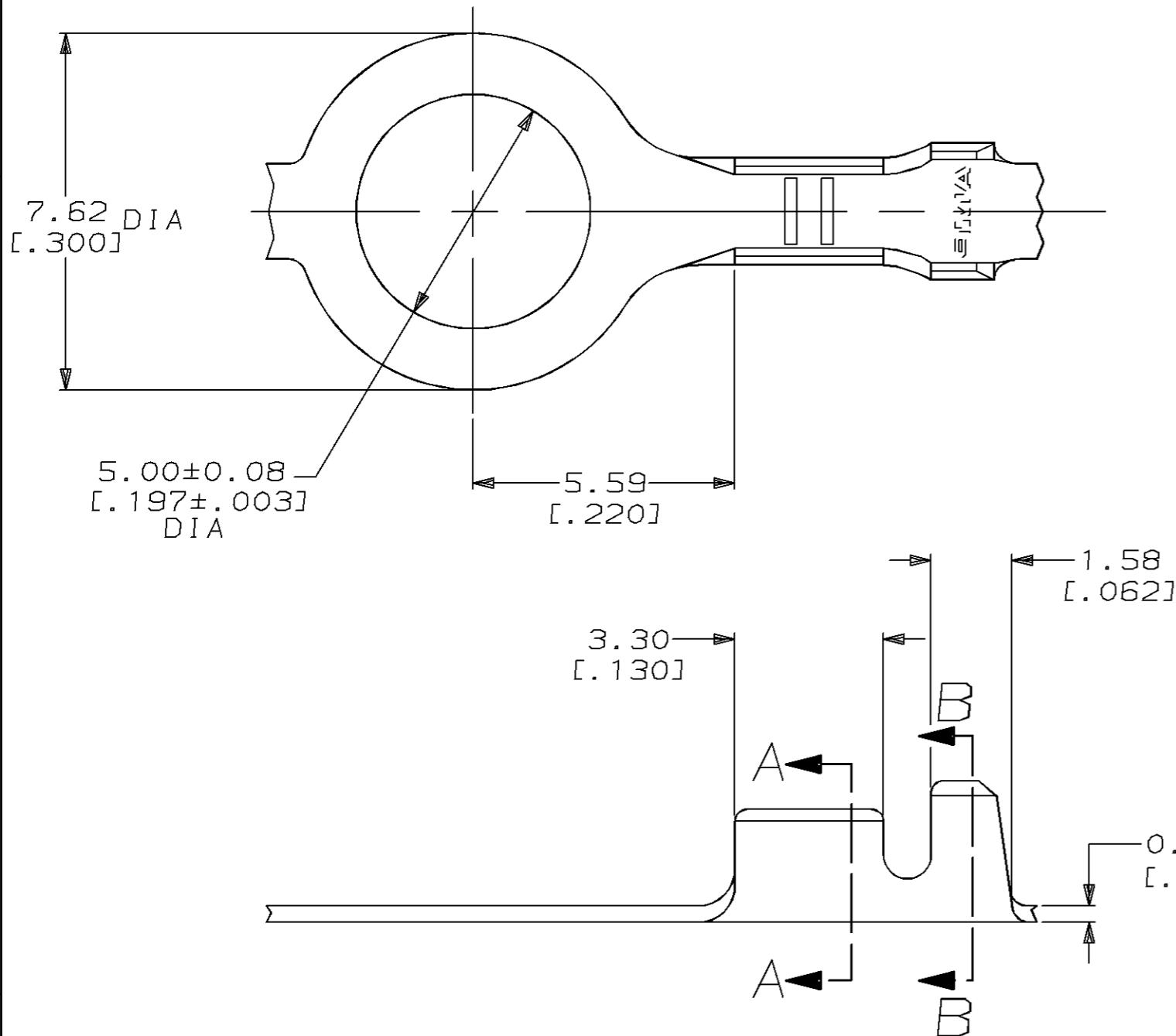
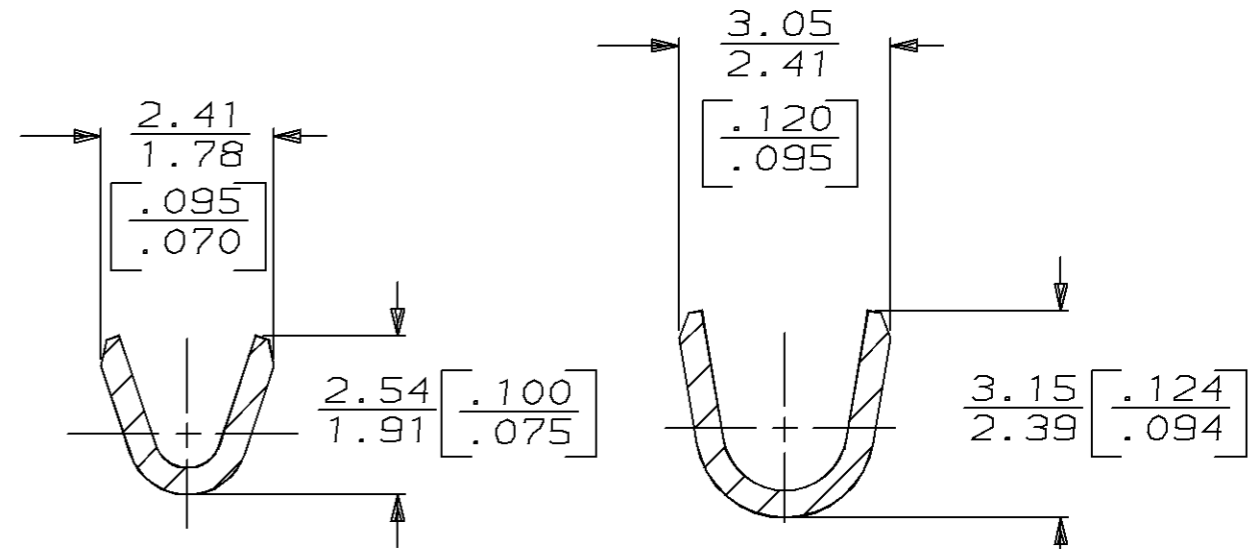


THIS DRAWING IS UNPUBLISHED. RELEASED FOR PUBLICATION, 19 .  
 © COPYRIGHT 19 BY AMP INCORPORATED. ALL INTERNATIONAL RIGHTS RESERVED.

LOC	DIST	P	F	REVISIONS				
				ZONE	LTR	DESCRIPTION	DATE	APPD
AF	50				E	REDRAWN & REACTIVATED 60555-1	6/9/94	PF/GY



- 1 CONTINUOUS STRIP ON REEL.
- 2 0.002032 [±.000080] MIN TIN PLATE PER MIL-T-10727.



SECTION A-A  
SCALE 10:1

SECTION B-B  
SCALE 10:1

THIS DRAWING IS A CONTROLLED DOCUMENT FOR AMP INCORPORATED. IT IS SUBJECT TO CHANGE AND THE CONTROLLING ENGINEERING ORGANIZATION SHOULD BE CONTACTED FOR THE LATEST REVISION.

	1.22-1.98 DIA [±.048-.078]	[24-20] AWG	60555-2
			60555-1
FINISH	INSULATION RANGE	WIRE RANGE	PART NO
DO NOT SCALE PRINT. UNLESS SPECIFIED DIMENSIONS IN mm [INCHES] TOLERANCES ON: 2 PLC DEC ± 0.25 [±.010] 3 PLC DEC ± - ANGLES ± -	DR 6/9/94 PHILLIP M FORTNEY	<b>AMP</b> AMP Incorporated Harrisburg, PA 17105-3608	
MATERIAL	CHK 6/9/94 JEFF RUTH		
082 BRASS	APPD 6/9/94 GARY YETTER	NAME <b>RING</b>	
FINISH	APPD 6/9/94 RON KUZO		
SEE TABLE	PRODUCT SPEC -	SIZE <b>B</b>	CAGE CODE 00779
	APPLICATION SPEC -	DRAWING NO <b>C-60555</b>	
	WEIGHT -	SCALE 8:1	SHEET 1 OF 1